

# SURVIVOR

CALL OUR 24 HOUR  
CONFIDENTIAL HELPLINE  
(+234)-809-210-0009

**WARIF**  
WOMEN AT RISK  
INTERNATIONAL FOUNDATION

## PROGRESS REPORT



# 108

BENEFICIARIES

either called our 24-hour  
confidential help line or  
visited the centre.

## OUR REACH

### REPORTED CASES



VISITORS TO  
THE CENTRE

19%



HELPLINE  
CALLERS

81%

### TREATMENT LANDSCAPE FOR SURVIVORS



MEDICAL  
TREATMENT

52%



COUNSELLING

48%

### INTERVENTION PROGRAMS



WESP

97%



PARENT  
FORUM

3%



### CASES MANAGED

CHILD SEXUAL ASSAULT 19%

DOMESTIC VIOLENCE 33%

SEXUAL ASSAULT 29%

OTHERS 19%

### CATEGORY OF SURVIVORS

MINORS 20%

ADULTS 80%

**ARE YOU A SURVIVOR  
OF RAPE OR SEXUAL  
VIOLENCE?**

Do you know someone who needs help?

Call us on our 24 hours confidential helpline

**08092100009**

## MESSAGE FROM THE FOUNDER



Our WARIF School Education Program (WESP) took off this quarter with a baseline survey of the prevalence of the problem of sexual assault and rape and the resulting pattern of behaviour of adolescent secondary school children in our communities. We announce our results this month – some of which are highlighted in this latest edition of our newsletter. It underscores the need for established programs such as WESP in our school educational system across the country to raise awareness, educate and empower our young. Let's all support the program and change the lives of our youth today!

**KEMI DA SILVA IBRU**

# PROGRESS REPORT

## WESP

Over the next 3 years, WARIF will focus on the development and implementation of the WARIF Educational School Program (WESP). This will consist of a series of preventive initiatives aimed at creating awareness amongst target groups of children and youths at different ages and levels of education, equipping them with the tools needed to manage their sexuality, recognize abuse and how to handle it.



### TWITTER CONVERSATION

The Twitter Conversation with Femi Jacobs in April 2017 was very successful, with the event 'trending' as the most talked about event in Nigeria on Twitter



### HEART OF THE MATTER SHOW

The Founder was on the On the Heart of the Matter show with Pastor Wale Adefarasin of Guiding Light Assembly in April 2017



### WESP INITIATIVE WITH DR. JULZ

The WESP Initiative was discussed with Dr. Julz on Nigeria Info FM Radio Station In April 2017.



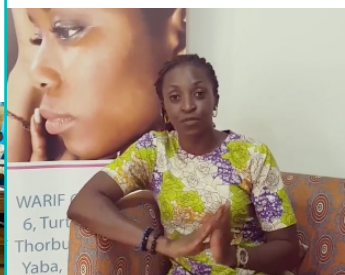
### PARTICIPATED IN THE OOA FOUNDATION PROGRAM

on April 26th 2017 participated in the OOA Foundation program in Abeokuta, reaching total of 82 beneficiaries. 37 parents and 45 children between the ages of 3-14 years old. 60% boys and 40% girls.



### FEATURED ON MOMENTS WITH MO

The centre was featured on Moments with MO with a visit to the Centre by the CEO of EbonyLive TV Ms. Mo Abudu.



### INSTAGRAM SHORT VIDEO POST

WARIF Ambassador; Ms. Kate Henshaw visited the centre in May 2017. She posted her tour via short videos on her Instagram page with a following of almost 1 million. The videos were watched by over 20,000 of her followers in the first day of her posting them.



### NEW MEDIA PARTNER

The Guardian Media Group Nigeria became Media partners with WARIF and paid a visit the centre



### PANELIST ON THE 2017 SHE FORUM AFRICA

Dr. Kemi DaSilva-Ibru was a panelist on the 2017 SHE Forum Africa Event in Abuja on May 25, 2017. The theme was 'Evolve or Be Left Behind'



### ON THE MORNING SHOW AT ARISE TV

Dr. DaSilva-Ibru was on the Morning Show at ARISE TV with Mrs. Biola Alabi





## “DEALING WITH RAPE” ON HELLONIGERIA

HelloNigeria hosted the founder on the topic topic ‘Dealing With Rape’



## FEATURED ON THE GOOD MORNING NAIJA SHOW ON WAZOBIATV

WARIF Counselor  
Ms. Ifeoma Anyaefolu was featured on the Show



## ANNUAL WAPA CONNECT CONFERENCE

The Ministry of Women Affairs and Poverty Alleviation (WAPA) held their Annual WAPA Connect Conference on Thursday June 08, 2017 with the theme “Fostering Domestic Harmony through Multi Perspective Analysis & Graphic Display/ Entrepreneurship in the 21st Century” WARIF founder, Dr. Kemi Da Silva-Ibru was one of the speakers at the event



## SUPPORT US

Volunteers play a vital role at WARIF, providing emotional and practical support to young women affected by sexual violence, supporting our office teams with project work or administration, and raising much-needed funds. Their support helps people feel stronger, understood and able to move forward with their lives. We always need new volunteers to join our local teams so please get in touch – we’d love to hear from you!

DONATE

₦66,000

NEXT  
QUARTER  
IN VIEW

DEVELOPMENT  
OF AN INITIATIVE  
TARGETING THE  
BOY-CHILD

EXPANDING THE  
REACH OF WESP  
TO MORE SCHOOL  
DISTRICTS

FORMAL LAUNCH  
OF THE WARIF  
DOCUMENTARY

With **66,000 NGN**, a survivor can get access to treatment and 2 follow-up visits over a 6 – month period. In-kind and financial support can be donated as a one-off, monthly, quarterly or annually. **Any donation you make is greatly appreciated.**

## OUR PARTNERS

A special thanks and mention of new partner/support within the quarter



### Donate to the WESP Initiative

It costs **NGN 50,000** to educate each student being introduced to the WARIF school education program ( it this right)



**WARIF**  
WOMEN AT RISK  
INTERNATIONAL FOUNDATION

6, Turton Street, Off Thorburn Avenue Yaba, Lagos, Nigeria.

(+234) 809 210 0008

info@warifng.org www.warifng.org

@WARIF\_NG warif\_ng /warifng

# Are you a survivor of rape or sexual violence?

Do you know any one who needs help?

Visit WARIF Centre at:  
No.6, Turton Street, off Thorburn  
Avenue, Yaba

**FREE Medical Care, Counselling,  
Shelter and Legal Aid**

Call us on our 24 hour confidential helpline

**08092100009**



Member of the Lagos State Domestic and Sexual Violence Response Team (DSRVT)

[info@warifng.org](mailto:info@warifng.org) | [www.warifng.org](http://www.warifng.org)



/warifng



@warif\_ng



@warif\_ng